



HCV framework: a valuable tool for prioritising REDD support towards critical areas for ecological, social and cultural values.

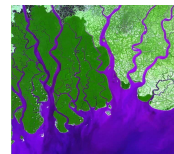
"Green" carbon standards - a discussion on development of social and environmental safeguards for forest carbon frameworks and projects.



Introduction to High Conservation Values

HCV Resource Network
Side-event to the UNFCCC
Bali, December 2007

Dr Christopher Stewart – Proforest





What is the HCV Framework?

- A practical conservation tool for ensuring that **critical values** in natural and production landscapes are identified, managed, and monitored.
- In the context of land use planning, ensures that **critical areas** are prioritised for conservation management.
- Developed in the context of forest certification (FSC, 1999) but relevant to all kinds of ecosystems and habitats.
- **Value driven:** covers **biodiversity and ecosystem** values as well as **social and cultural** values

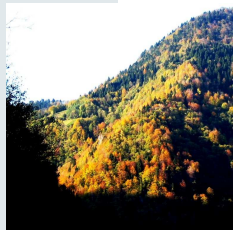


The six High Conservation Values

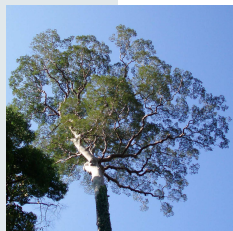
- Biodiversity
- Landscapes
- Ecosystems
- Ecosystem services
- Basic human needs
- Cultural identity



HCV1 - Areas containing globally, regionally or nationally **significant concentrations of biodiversity values** (e.g. endemism, endangered species, refugia).



HCV2 - Globally, regionally or nationally significant **large landscape-level areas** (e.g. forests) where **viable populations** of most if not all naturally occurring species exist in **natural patterns of distribution and abundance**.



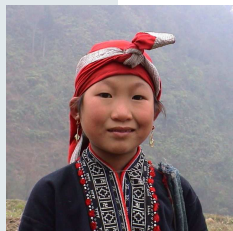
HCV3 - Areas that are in or contain **rare, threatened or endangered ecosystems**.



HCV4 - Areas that provide **basic ecosystem services in critical situations** (e.g. watershed protection, erosion control).



HCV 5 - Areas fundamental to meeting **basic needs of local communities** (e.g. subsistence, health).



HCV6 - Areas critical to **local communities' traditional cultural identity** (areas of cultural, ecological, economic or religious significance identified in cooperation with such local communities).



The HCV process

Identify

- **What** are the potential HCVs in this region?
- Which values **occur** in the area?
- **Where** are these values located?

Manage

- What are the existing **threats** to the values?
- Habitat **area** needed to maintain the values?
- How should habitat be **managed**?

Monitor

- **What** needs to be monitored?
- **How** will monitoring be done?
- How will the **results** of monitoring be used?

Consultation



HCV framework in natural resource planning

Certification standards:

- Sustainable Forest Management (FSC, MTTC)
- Round Table on Sustainable Palm Oil



Sustainable production criteria

- Migros Criteria for Sustainable Soy production
- UK Renewable Transport Obligation
- Dutch Cramer Commission 'Testing Framework for Sustainable Biomass'



Integration in national or regional land use planning frameworks

- Russia, China, Bulgaria, Romania... Indonesia?



Responsible investment policies:

- HSBC, ABN AMRO, JPMorgan Chase, Bank of America



Responsible purchasing policies:

- Wood Products: Ikea, Tetrapak
- Vegetable oils: BP Biofuels, Cargill; ASDA (UK Walmart), Tesco, Sainsbury



Future developments:

- 'Green Carbon' standards?
- Round Table on Sustainable Soy?
- IFC Biodiversity And Commodities Programme?





Safeguards

- HCV is a decision-making framework: not a stand-alone guarantee of sustainability
- Precautionary approach
- Issues of land tenure and legality need to be addressed
- Can only operate where governance allows
- Requires monitoring to ensure management works to maintain values
- Conversion of natural ecosystems poses an irreversible threat to HCVs: assessment process must, as far as possible eliminate uncertainty *prior* to any conversion activity

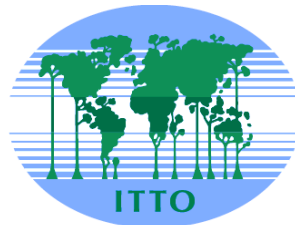


The HCV Resource Network

Mission:

"...to maintain and enhance critical social and environmental values of forests and other ecosystems as part of responsible land management, and to advance locally adaptable management strategies through the development and use of the HCV approach."
(HCV Resource Network Charter, 2006)

Founders:

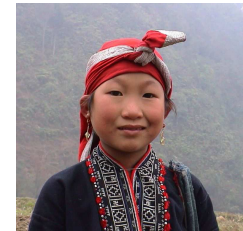
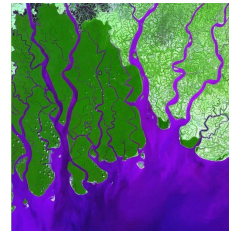


World Business Council for
Sustainable Development



Forest Peoples
Programme





Thank You