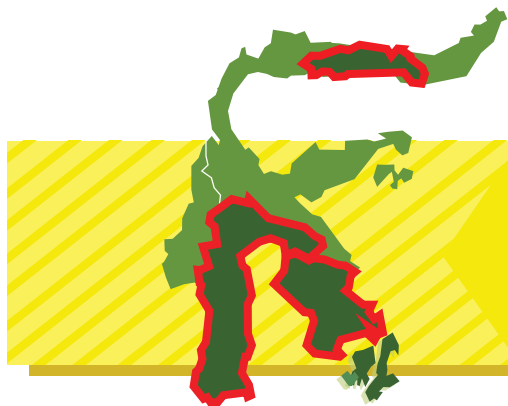


## PROJECT ACHIEVEMENTS

APRIL 2011 - MARCH 2014



Operates in **10** districts  
in the provinces of  
South Sulawesi,  
Southeast Sulawesi and  
Gorontalo.

**11,622** people



have gained knowledge regarding  
sustainable natural resources  
management:

workshops



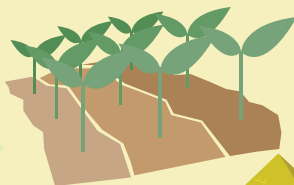
training  
courses



meetings



**132** demonstration trials



established with

**770** farmers.





**15** rapid marketing appraisals conducted with :

**380**  farmers &  traders.

♂ **60%** **40%** ♀

**2521** individuals

♂ **77%** **23%** ♀

**& 29**  institutions

have gained better understanding of participatory governance.



**653** people

♂ **72%** **28%** ♀

trained in environmental services reward schemes at

**28** events.



**754** people

♂ **58%** **42%** ♀

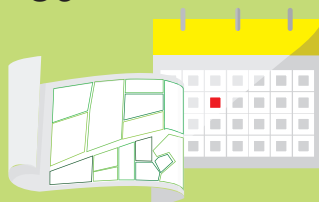
trained in marketing at **61** events.



**1445** people

♂ **75%** **25%** ♀

trained in land-use planning at **39** events.



**77** farmer groups with total membership of



**1400**

♂ **66%** **34%** ♀

actively participating in the project.





17 students

conducted field  
research for their  
degree programs  
or other work.



1198  
people  
in South Sulawesi



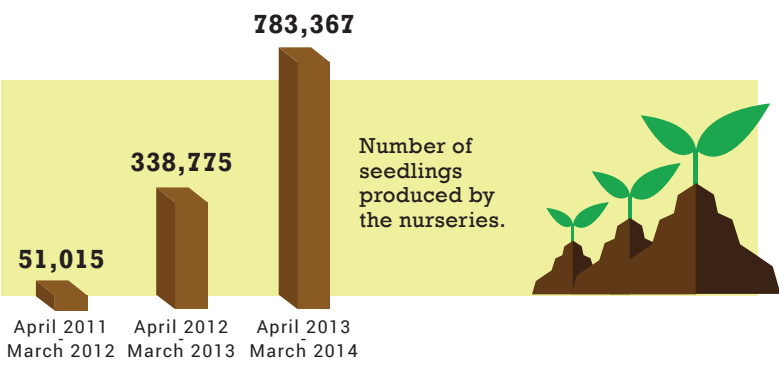
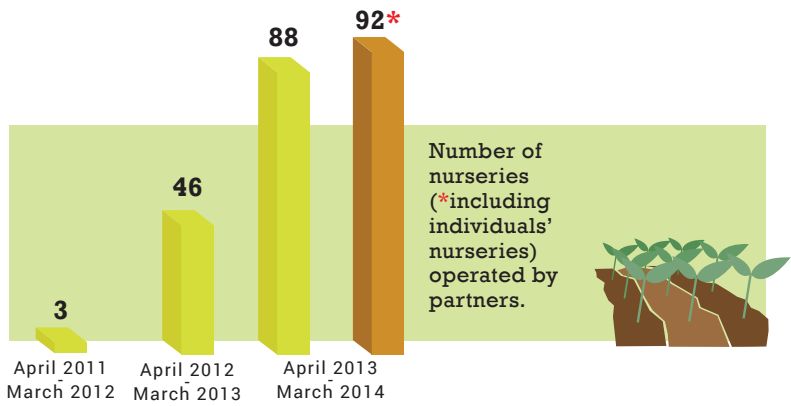
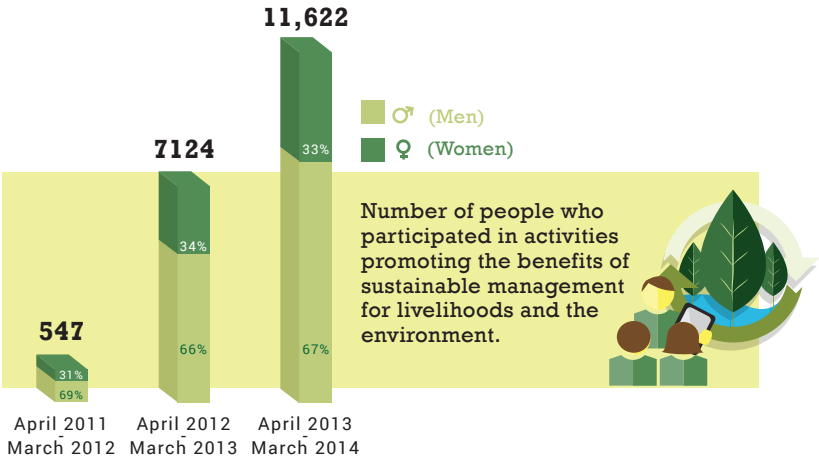
7 farmer field schools on management  
of cocoa, coffee,  
clove, pepper,  
durian and  
rambutan  
held in South and  
Southeast Sulawesi.

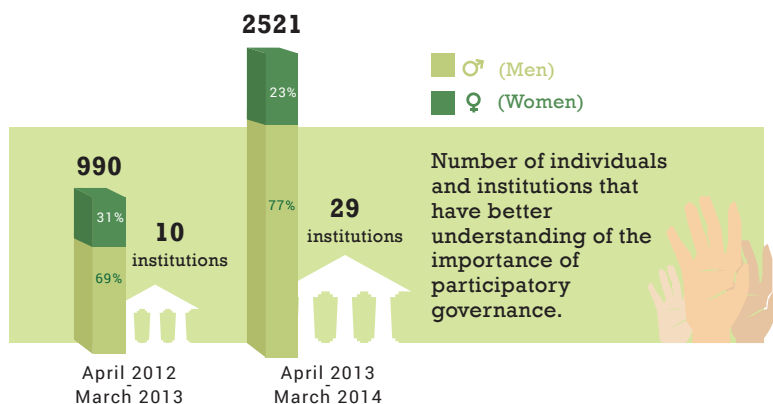
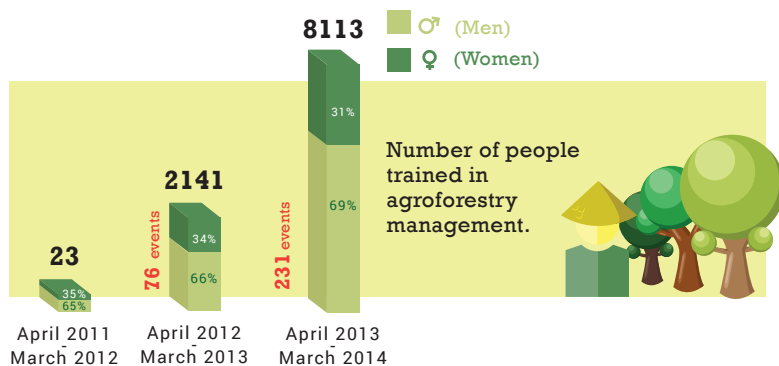
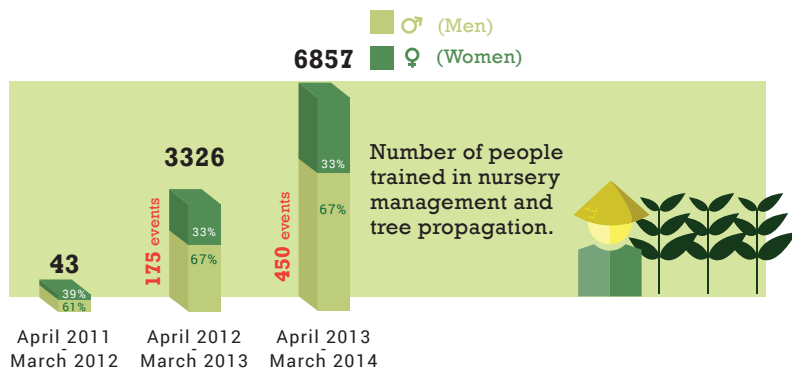


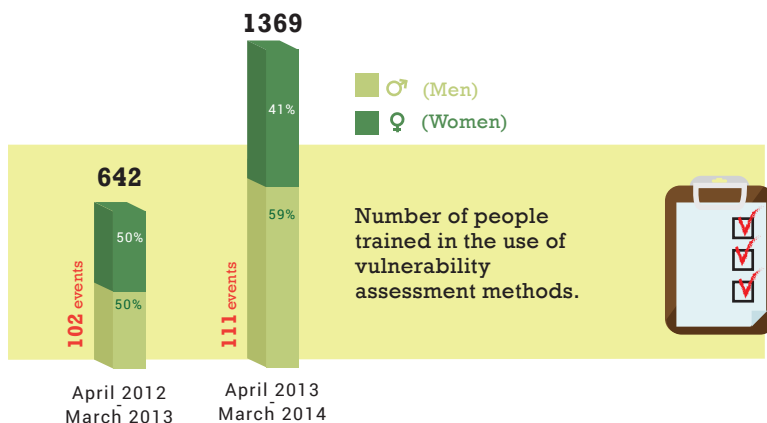
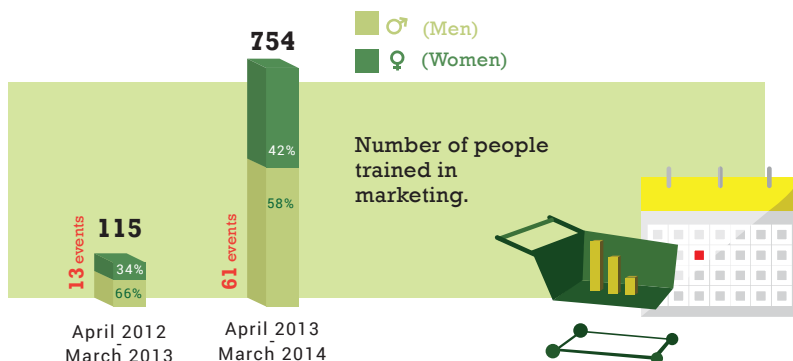
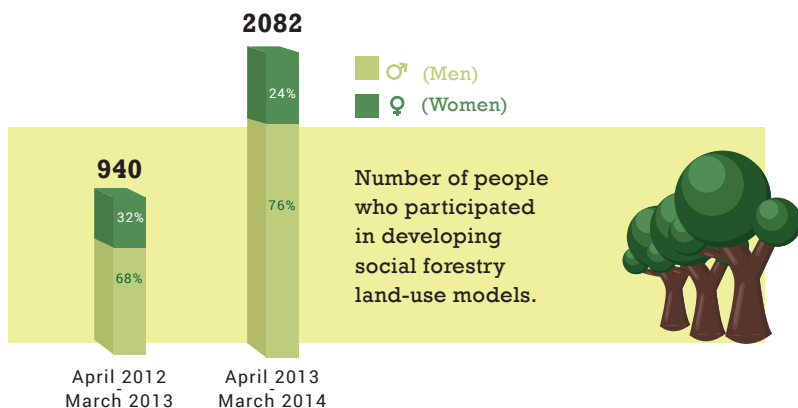
535  
people in  
Southeast Sulawesi



involved in the farmer field schools.







World Agroforestry Centre (ICRAF)  
Southeast Asia Regional Office

Jl. CIFOR, Situ Gede, Sindang Barang, Bogor 16115  
PO Box 161, Bogor 16001, Indonesia

Tel: +62 251 8625415; fax: +62 251 8625416

email: [icraf-indonesia@cgiar.org](mailto:icraf-indonesia@cgiar.org)

[http://www.worldagroforestry.org/regions/southeast\\_asia](http://www.worldagroforestry.org/regions/southeast_asia)



Canada

