



## Could a virtual collaborative platform help preserve tropical peatlands?

Thursday, 5 May 2022 | 10:00 – 11:30 AM (KST)



Collaborative virtual platforms promise many benefits for knowledge exchange. However, such platforms may fall short on this promise as mutual collaboration agreements need to be set up, and decision makers need to adapt to such platforms and technologies to bridge any gaps. Ideally, a collaborative platform should play a role as a game changer.

The Peatland Knowledge Platform, which has its soft launch in July 2021, serves as a go-to place where people can find and use publicly available knowledge relating to peatlands. The platform enables people to share their knowledge and expertise, and facilitates the submission of and access to documents, lesson learned, discussions, etc. to transfer experience and knowledge. Information on the platform can comprise projects, publications, datasets and other related communication products resulting from peatland research.

### About ITPC

The International Tropical Peatlands Center (ITPC) is a multi-stakeholder and multi-donor South-South cooperation involving Indonesia, the Democratic Republic of the Congo, Republic of Congo and Peru with coordinating partners the Center for International Forestry Research (CIFOR), the United Nations Environment Programme, the Food and Agriculture Organization of the United Nations and the Global Peatlands Initiative.

ITPC is organizing a session at the World Forest Congress to gain lesson learned and discuss milestones, experiences, and ways the ITPC collaborative platform can enhance its performance.

The session aims to look at:

- key points for strategies
- aligning with views from partners and interested parties.

This session is aligned with the ITPC mandate to facilitate interdisciplinary dialogues to advance the conservation and sustainable management of peatlands globally.





## Speaker and Moderator

### Moderator



**Sufiet Erlita**  
CIFOR-ICRAF

### Opening Remarks



**Agus Justianto**  
Director  
General of Sustainable Forest Management, Ministry of Environment and Forestry, Indonesia

### Panellists



**Haruni Krisnawati**  
ITPC Lead Coordinator



**Sri Parwati Murwani Budisusanti**  
Director for Peatland Degradation Control, Ministry Environment and Forestry, Indonesia



**Choi Hyung Soon**  
Director of Global Forestry Research Division, National Institute of Forest Science (NIFoS) – Republic of Korea



**Dianna Kopansky**  
Lead Coordinator, Global Peatland Initiative, UNEP



**Iwan Setiawan**  
Deputy Director Corporate Strategic and Relations, Sinar Mas Forestry, Indonesia

## Programme

Time	Topic	Speakers
5 min, 10:00 – 10:05	Introduction and review of the agenda	Moderator
10 min, 10:05 – 10:15	Opening remarks	Agus Justianto
10 min, 10:15 – 10:25	ITPC data portal current stage and way ahead	Haruni Krisnawati
10 min, 10:25 – 10:35	Government peatland knowledge platform	Sri Parwati Murwani Budisusanti
10 min, 10:35 – 10:45	Synergies on tools and data for collaborative platform	Choi Hyung Soon
10 min, 10:45 – 10:55	Challenges and opportunities for setting up global peatland collaborative platform	Dianna Kopansky
10 min, 10:55 – 11:05	Lesson learned on approaches to produce peatland knowledge	Iwan Setiawan
20 min, 11:05 – 11:25	Discussion Questions, comments, and views from participant	Moderator
5 min, 11:25 – 11:30	Closing summary and photo session	Moderator

Contact: **Haruni Krisnawati**, [itpcsecretariat@cgiar.org](mailto:itpcsecretariat@cgiar.org)

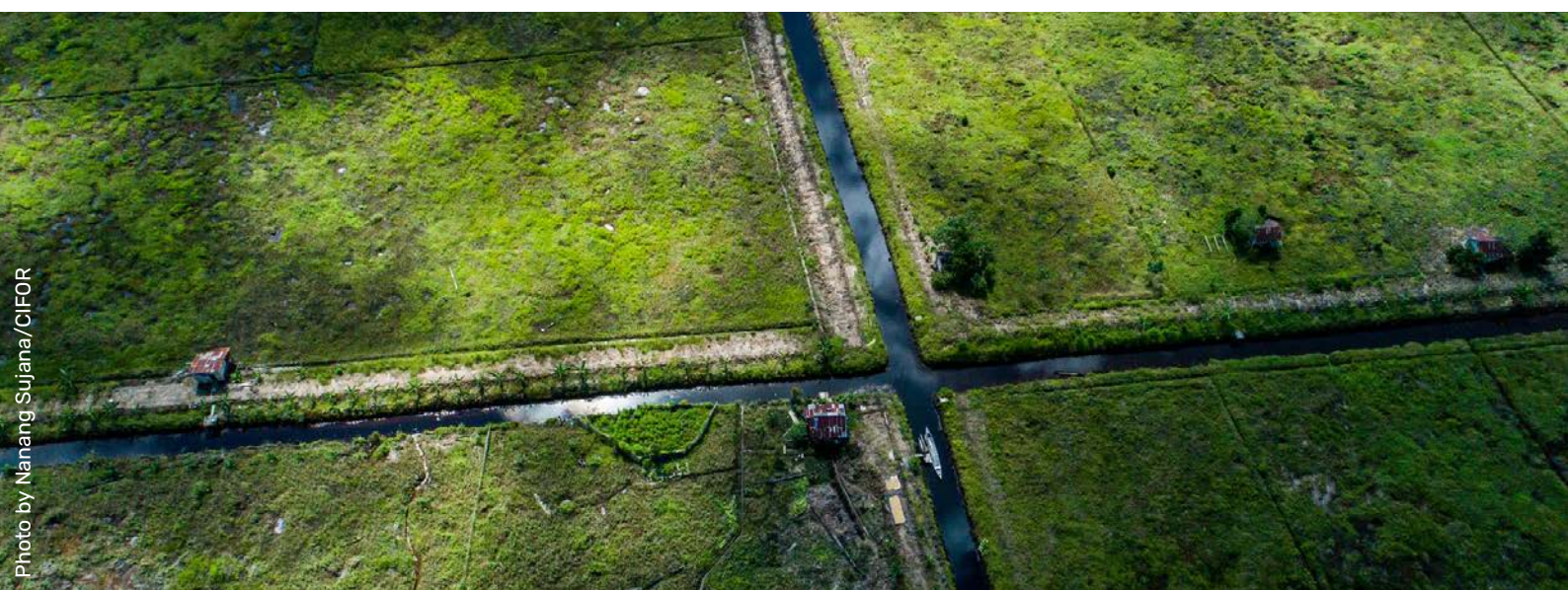


Photo by Nanang Sujana/CIFOR