



**USAID**  
FROM THE AMERICAN PEOPLE



# Trees Outside Forests in India (TOFI) Program





**Trees Outside Forests in India (TOFI) is a five year (2021 to 2026) joint program of the United States Agency for International Development (USAID) and the Ministry of Environment, Forest and Climate Change (MoEFCC) of the Government of India. It is being implemented by a consortium led by CIFOR-ICRAF.**

Growing trees outside forests holds significant potential for bringing about multiple environmental, economic, and social benefits. Scaling up trees outside forests can support the Government of India fulfill several national goals and international commitments. These include increasing forest and tree cover to 33% as envisaged in the National Forest Policy, sequestering 2.5 to 3 billion tons of additional carbon dioxide equivalent (CO<sub>2</sub>e) as part of its

Nationally Determined Contribution (NDC) to the Paris agreement, and restoring 26 million hectares of degraded land under the Bonn Challenge. However, various policy, economic, capacity, and information-related barriers impede the uptake of trees outside forests. TOFI is designed to address these barriers while pursuing opportunities for further expanding trees outside forests in India.



**To significantly expand the area under trees outside forests in the seven participating states - Andhra Pradesh, Assam, Haryana, Odisha, Rajasthan, Tamil Nadu, and Uttar Pradesh, while enhancing livelihoods and ecosystem services, especially carbon sequestration.**



MAP FOR REPRESENTATION PURPOSES ONLY





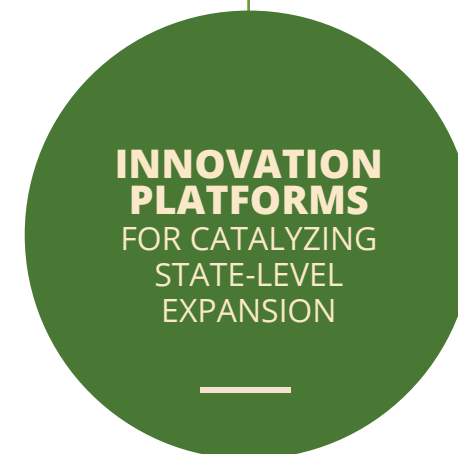
**1 Enabling environment strengthened for expansion of trees outside forests.** This objective will focus on expanding the resource base and commitment at large for increasing the area under trees outside forests; certificating products derived from trees outside forests and regulating their trade to boost sustainable and equitable value chains; mainstreaming standards for growing quality planting material; and ensuring better alignment of state and national policies for trees outside forests.

**2 Expansion of area under trees outside forests economically incentivized and risks reduced.** This complements the first objective, focusing on scaling up tree-based enterprises by establishing business incubation and extension hubs; enhancing access to business support and financial services; improving access to quality planting material through the establishment of high-tech, large- and medium-scale nurseries; and developing a Payment for Ecosystem Services (PES) scheme to incentivize the establishment and maintenance of ecologically and economically important tree species in mainstream farming systems and landscapes.

**3 Improved access to quality and actionable information about trees outside forests.** This supports the achievement of the first two objectives by enhancing the delivery of technical information and extension services for scaling up trees outside forests and related products; promoting widespread access to technical- and market-related information through a virtual call centre and online dashboard; promoting use of a smartphone application to inform technical decisions on the integration of trees into farming systems and landscapes; and carrying out solution-oriented research and outreach that accelerates expansion and inclusive impact in the targeted states.



**“IF the impediments to successful expansion of trees outside forests in India are reduced or removed AND IF technical know-how and high-quality planting material are available AND IF financing, insurance, and market opportunities are available, THEN the area of trees outside forests will increase, thereby improving inclusive economic opportunities, and enhancing ecosystem services including carbon sequestration and soil health.”**



Innovation Platforms will play a pivotal role in implementing TOFI at the state level. The innovation platforms will bring together diverse stakeholders such as farmers, growers, traders, food processors, researchers, consumers, and policy makers to solve problems and pursue opportunities to achieve shared goals. They will be vital in identifying opportunities and coordinating actions for expanding trees outside forests in the participating states to benefit people, the environment, and planetary health.







THE TOFI PROGRAM  
WILL CONTRIBUTE TO:

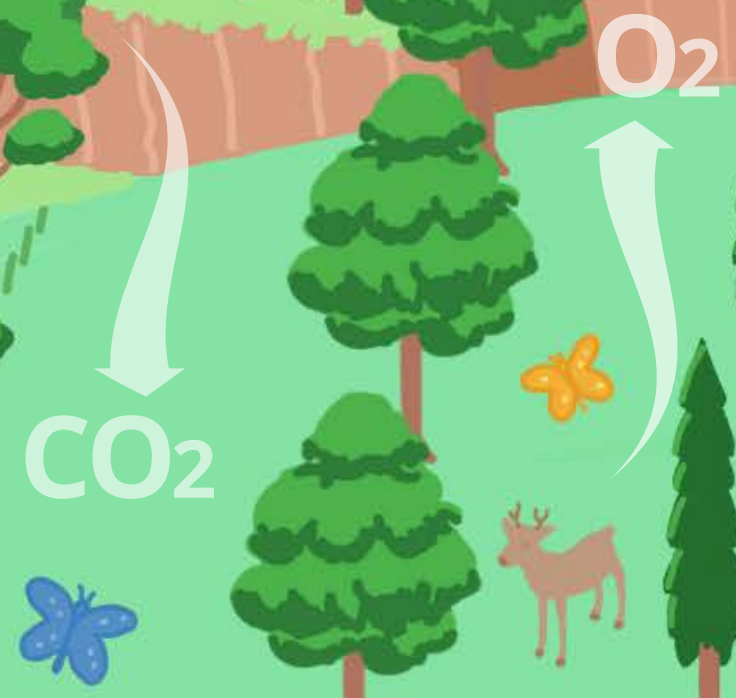
2.8  
MILLION  
HECTARES

OF NEW LAND UNDER TREES  
OUTSIDE FORESTS

420  
MILLION  
TONS

CARBON DIOXIDE EQUIVALENT  
(CO<sub>2</sub>e) SEQUESTERED

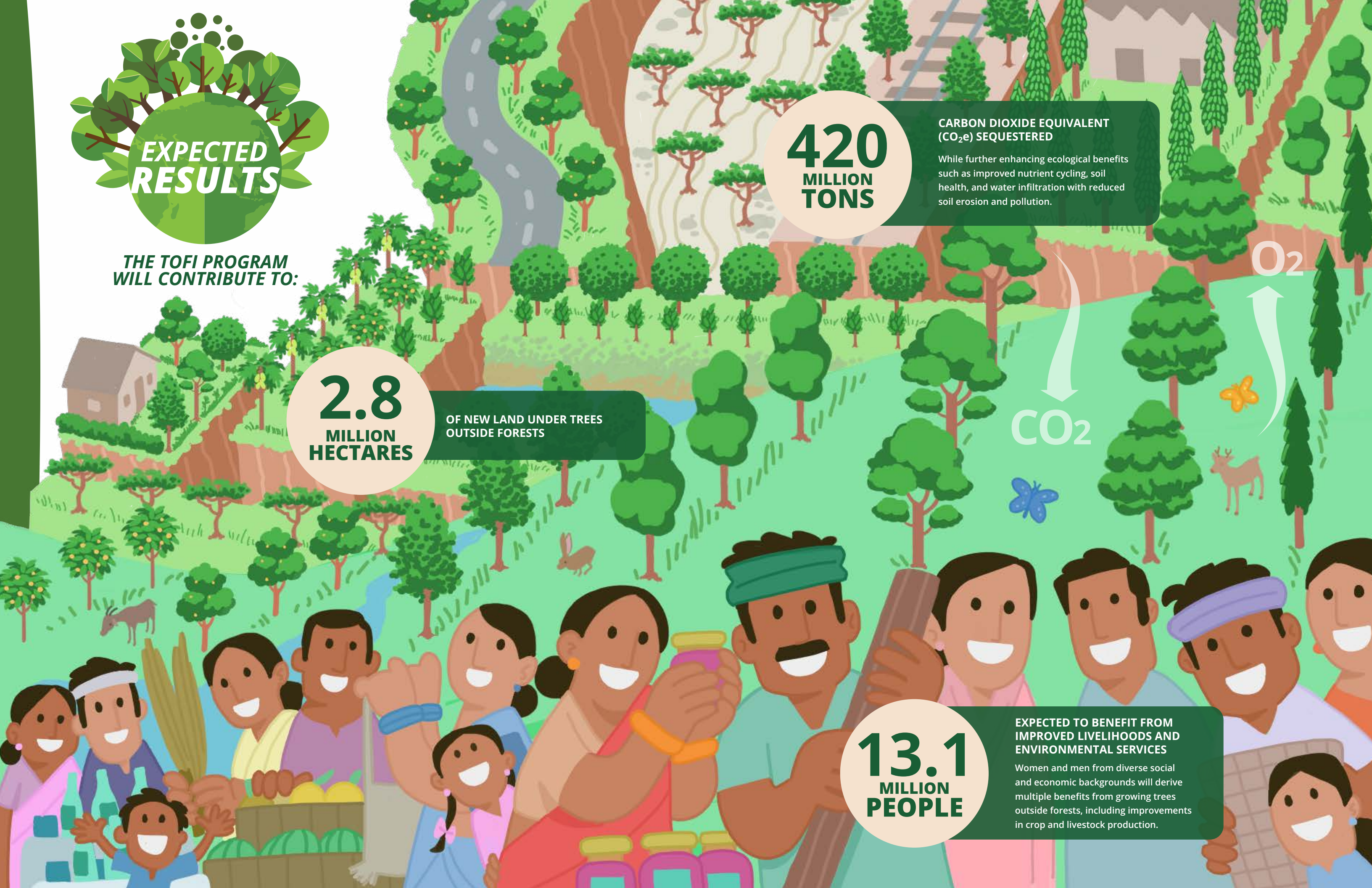
While further enhancing ecological benefits  
such as improved nutrient cycling, soil  
health, and water infiltration with reduced  
soil erosion and pollution.



13.1  
MILLION  
PEOPLE

EXPECTED TO BENEFIT FROM  
IMPROVED LIVELIHOODS AND  
ENVIRONMENTAL SERVICES

Women and men from diverse social  
and economic backgrounds will derive  
multiple benefits from growing trees  
outside forests, including improvements  
in crop and livestock production.





# THE CONSORTIUM

TOFI is being implemented by a consortium of organizations and institutions led by CIFOR-ICRAF. Each consortium member brings complementary areas of expertise and experience to facilitate expansion of trees outside forests. The key consortium partners include Ashoka Trust for Research in Ecology and the Environment (ATREE); Central Agroforestry Research Institute (CAFRI); National Institute of Agricultural Economics and Policy Research (NIAP); Tropical Forest Research Institute (TFRI); and Forest College and Research Institute of Tamil Nadu Agricultural University (TNAU).



## FOR MORE INFORMATION

**Varghese Paul**  
**Deputy Director,**  
**Environment and Natural**  
**Resources, General**  
**Development Office,**  
**USAID/India**

American Embassy,  
Shantipath, Chanakyapuri  
New Delhi-110021, India  
[vpaul@usaid.gov](mailto:vpaul@usaid.gov)

**R. Raghu Prasad**  
**Inspector General of**  
**Forests,**  
**Ministry of Environment,**  
**Forest and Climate Change**  
**(MOEFCC)**

Indira Paryavaran Bhawan,  
Jor Bagh Road  
New Delhi-110003, India  
[raghu.prasad@gov.in](mailto:raghu.prasad@gov.in)

**Manoj Dabas**  
**Chief of Party-TOFI,**  
**Center for International**  
**Forestry Research and**  
**World Agroforestry**  
**(CIFOR-ICRAF)**

33, Third Floor,  
South Patel Nagar,  
New Delhi-110008, India  
[m.dabas@cifor-icraf.org](mailto:m.dabas@cifor-icraf.org)

**For further details, visit: [www.cifor-icraf.org/tofi](http://www.cifor-icraf.org/tofi)**

### Disclaimer

This brochure is made possible by the support of the American People through the United States Agency for International Development (USAID). The contents of this document are the sole responsibility of CIFOR-ICRAF and do not necessarily reflect the views of USAID or the United States Government.